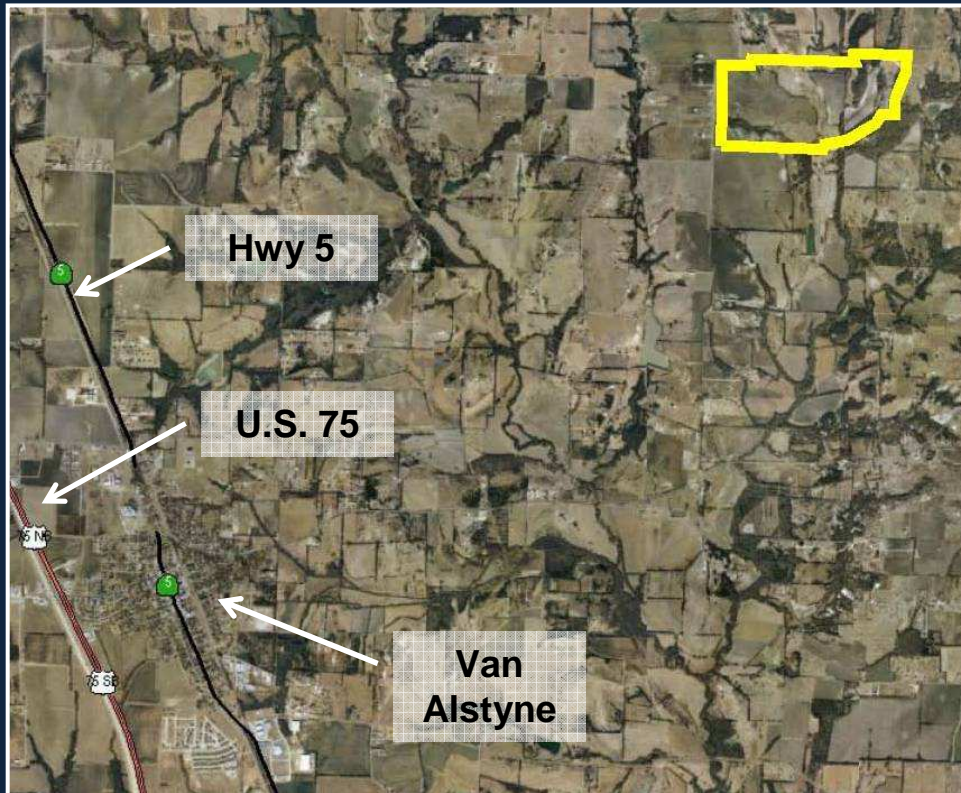


For Sale

361.5 Acres – Van Alstyne, Texas



Location Overview

- 361.5 acres located at the northeast corner of Edwards Road and Stricklin Road in Grayson County near the City of Van Alstyne
- Located just over five miles east of U.S. 75 and less than two miles north of F.M. 121
- Van Alstyne, Texas is located on U.S. 75 approximately 15 miles north of McKinney and 15 miles south of Sherman

For more information, please contact:

A.J. Reed
214-334-0457
aj.reed@tx.rr.com



LandPlan Development
Corp.

5400 Dallas Parkway, Frisco, Texas 75034
(214) 618-3800
www.landplan.net

Edwards Rd



Stricklin Rd



